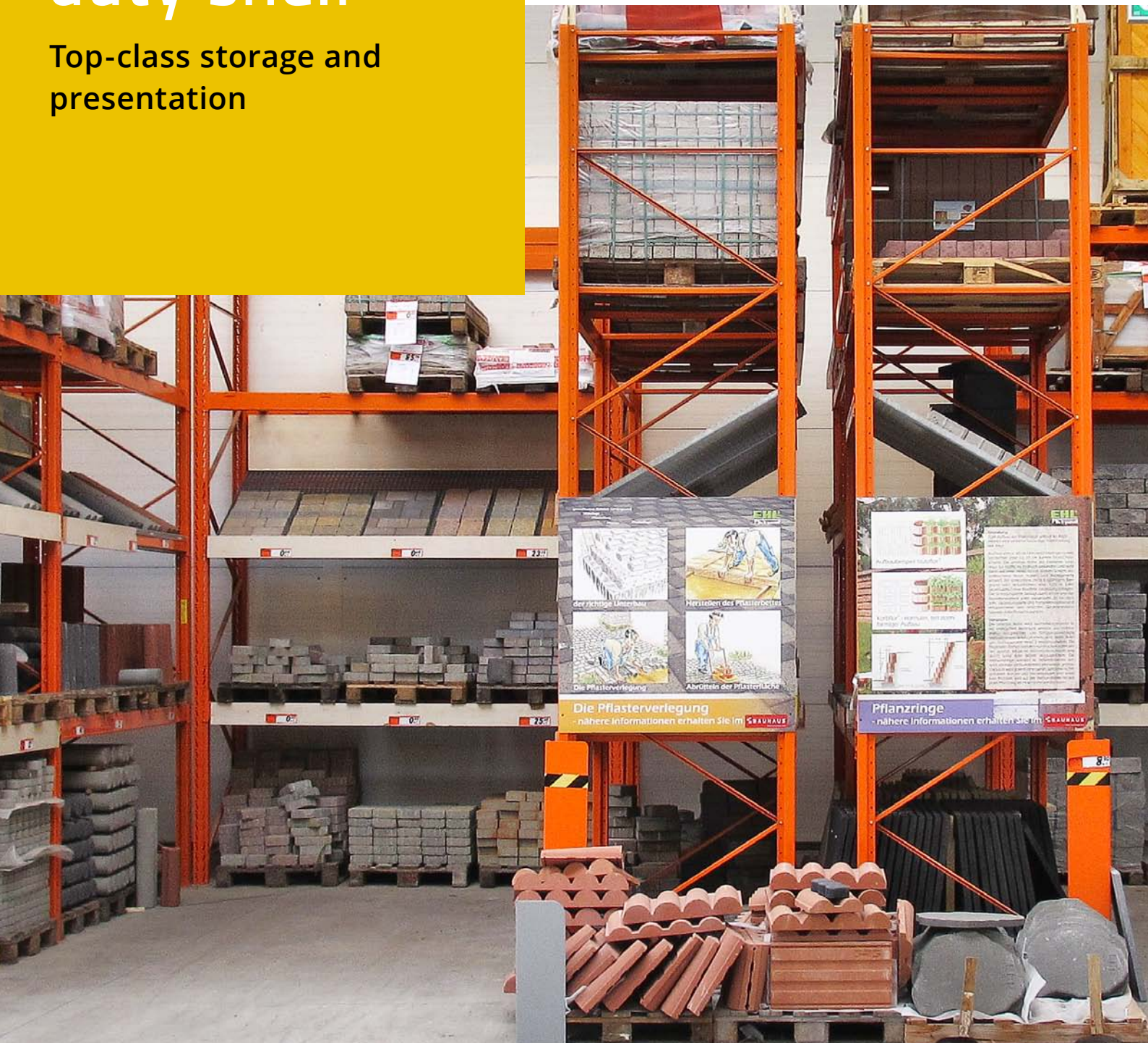


SL100 heavy duty shelf

Top-class storage and
presentation



A MODULAR SYSTEM DESIGNED FOR PROFESSIONALS

An extremely strong and flexible shelving system with shelf heights of up to 12 m can be loaded both manually and by stacker trucks, versions for indoor and outdoor use – the SL100 shelving system from Brass offers everything you need for professional storage. But it doesn't stop there: Thanks to its broad range of accessories, you can customise your own presentation and small parts areas within the shelving. All this means the SL100 system has been a tried-and-tested solution in consumer markets, production and logistics operations for many years. Brass also offers everything you need for your shelving system; from planning and structural analyses through to safety precautions, training and maintenance.



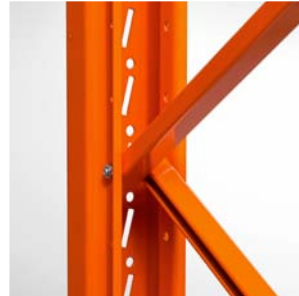
The multi-folded profile system made of 2- and 3-mm thick steel forms the basis of the SL100 system

Stability is guaranteed by the struts and the diagonal holes via which the shelf loads further stabilise the shelving

The feet are screwed to the floor



Simple handling: The cross-beams with welded-on claws are hung into the profile and fixed in place using safety pins



In our powder coating line, all the elements are given a high-quality and visually appealing surface finish



BASIC ELEMENTS

Side parts

Together with the crossbeams, these form the basic framework for all shelving. The ex-factory horizontal and diagonal struts serve to stabilise the shelving. For additional security, the feet are anchored into the floor; wall mounting is also available if necessary.

Standard sizes

Height	Depth [mm]	
3010 mm	750	1100
4000 mm	750	1100
4550 mm	750	1100
5530 mm	750	1100
6020 mm	750	1100
6800 mm	750	1100

Individual heights (from 1260 to 12040 mm) and depths upon request

Loads

Depending on the version, maximum bay load (sum of all shelving loads between two stands) is up to 15 tons.

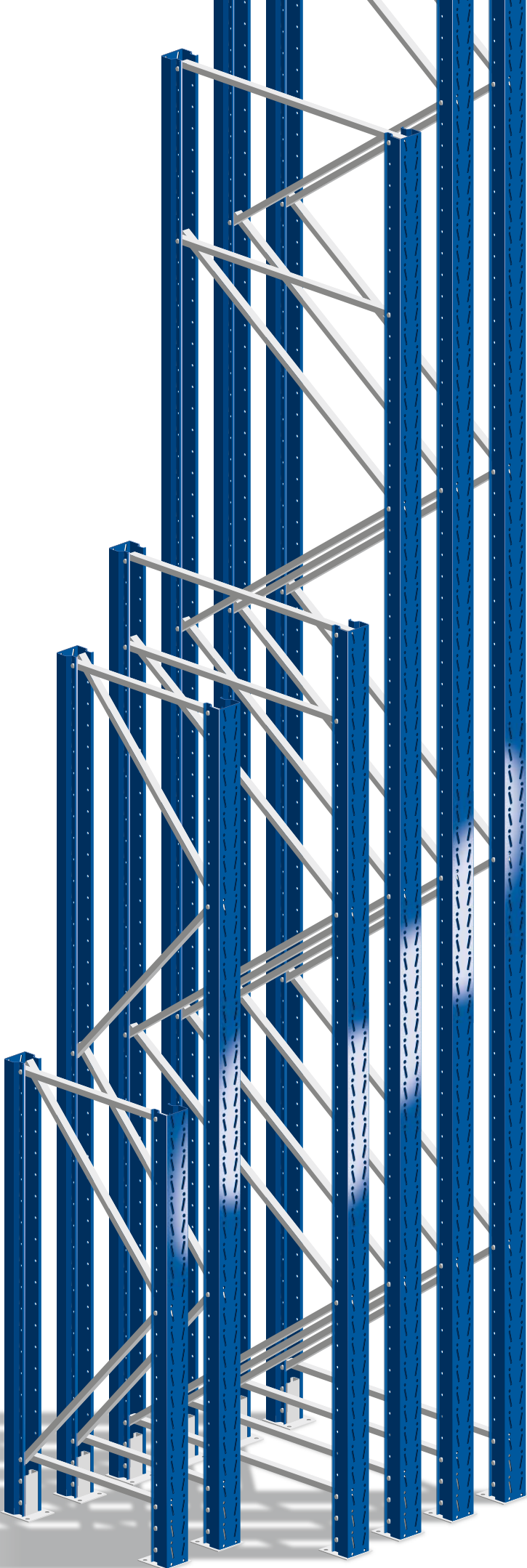
Colours

The frame stands are completed with a high-quality finish in our powder coating line. All RAL colours are possible.

Standard colours:

- White
- Anthracite metallic
- Gentian blue
- Orange
- Galvanised

Other colours upon request



Standard crossbeams

Profile	W x H [mm]	Sheet thickness	Bay load* [kg] at	
			L 1800	L 2700
RT60	40 x 60	2	1300	700
RT80	40 x 80	2	2200	1400
RT100	40 x 100	2	2900	2000
RT120	40 x 120	2,5	4300	3000
RTS120	40 x 120	4	5600	4200
RP104 (with angle)	34 x 55 + 15	2	540	540
RP116 (with angle)	34 x 80 + 15	2	1000	1000

* maximum load per crossbeam pair

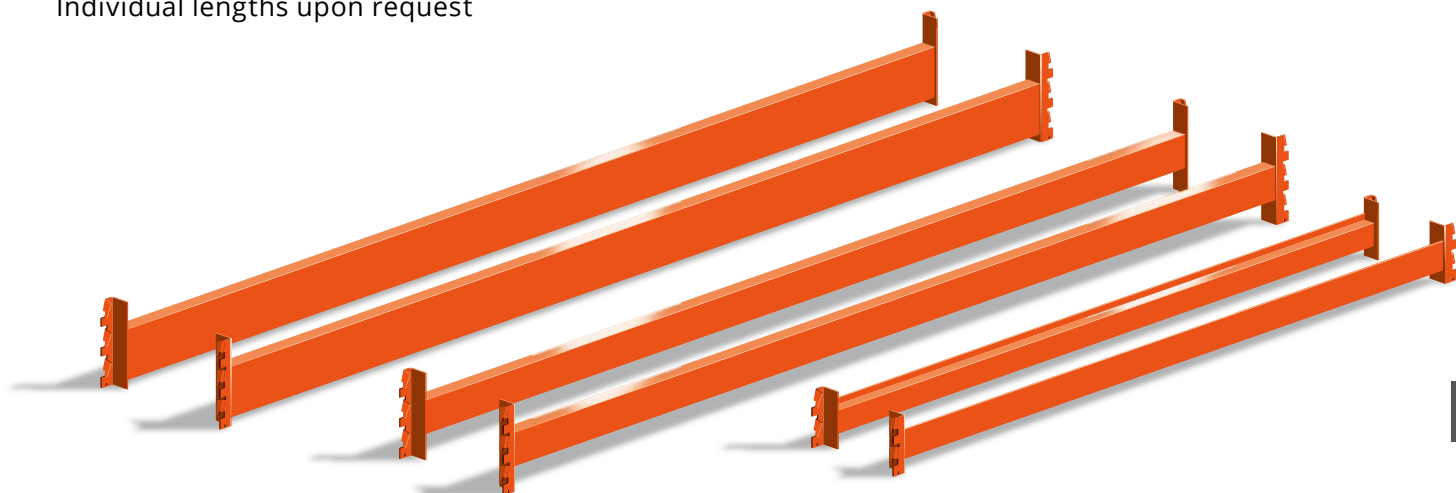
Standard lengths [mm]

1400	1800	2400	2540	2700	3600
------	------	------	------	------	------

Individual lengths upon request

Versions

- Profiles which are flush at the top, e.g., for tables with continuous work surfaces over several shelf bays
- Profiles which are flush at the bottom, for crossbars directly above the floor
- Profiles to cut to size, with U-mounts with claws



5

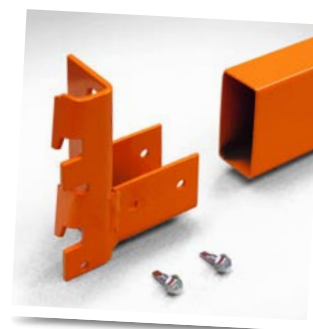
Accessories



Shelf connectors for suspension, for double shelving with 10 cm or 20 cm spacing



Shelf connectors fixed to the system, for double shelving from 10 cm spacing



U-attachments for suspending tube profiles



Packing plates to compensate for any floor unevenness



Floor anchor M12, length 110 mm - 160 mm



Load stickers as per the statutory requirements

HEAVY DUTY STORAGE

With standard shelving depths of 110 cm and 75 cm, the SL100 system is designed for storing Euro pallets (120 x 80 cm) and wire mesh crates. Accessories make storing goods with a stacker easier. The wide range of shelving elements and versions open the door to numerous customised storage solutions.

Pallets and wire mesh crates



Mobile crossbeams aid load distribution, grid rails facilitate positioning

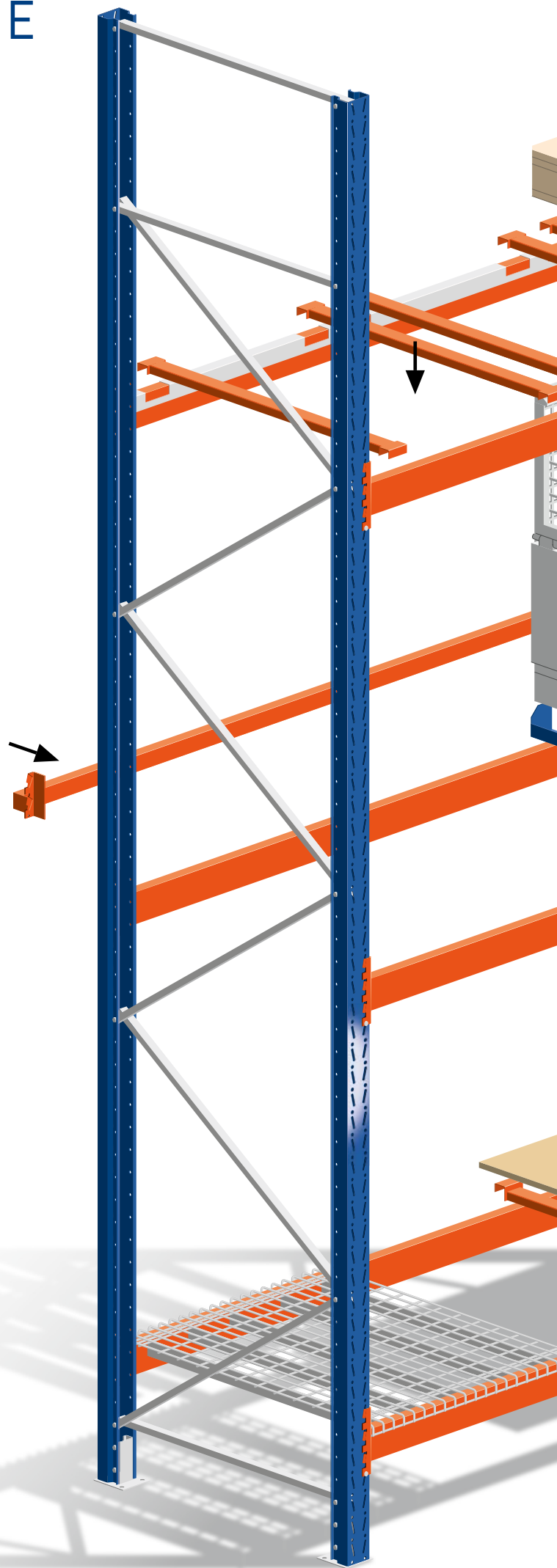
Low angled frames provide a complete storage space, including side and depth stops and load distribution

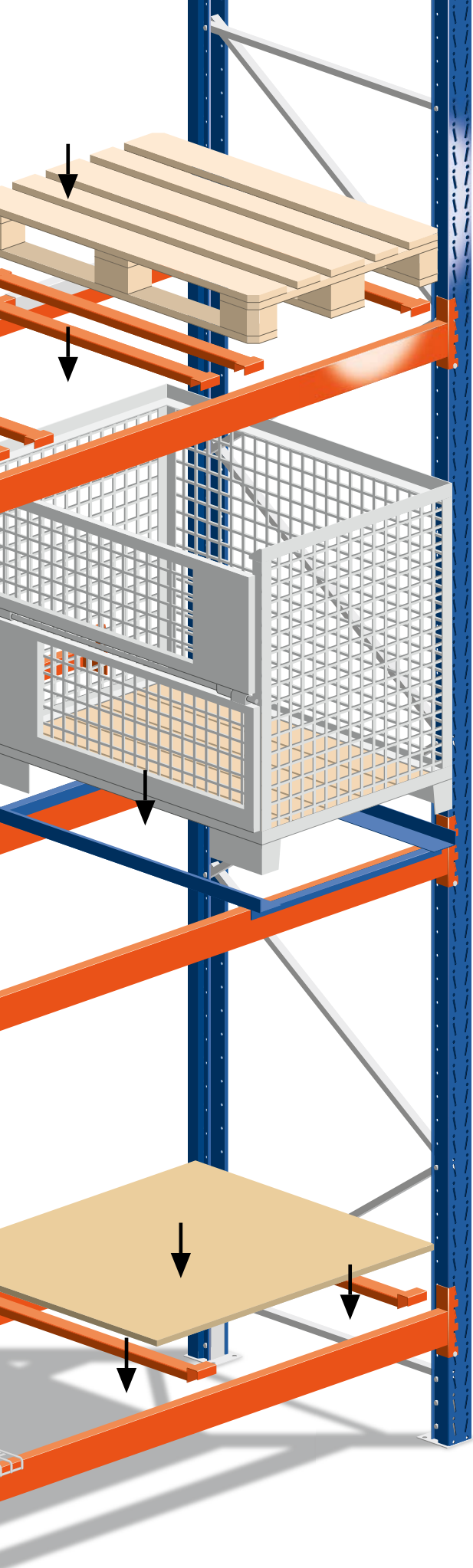


Stable protection at the back of the shelving which can be hooked in place



Attachable protection at the back of the shelving

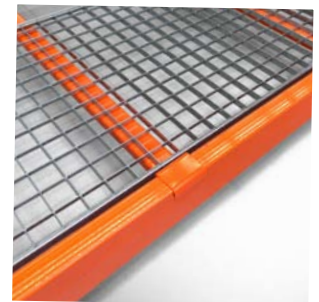




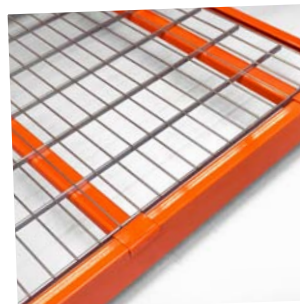
Shelving elements



Rack bay with timber shelving, with stepped crossbeams

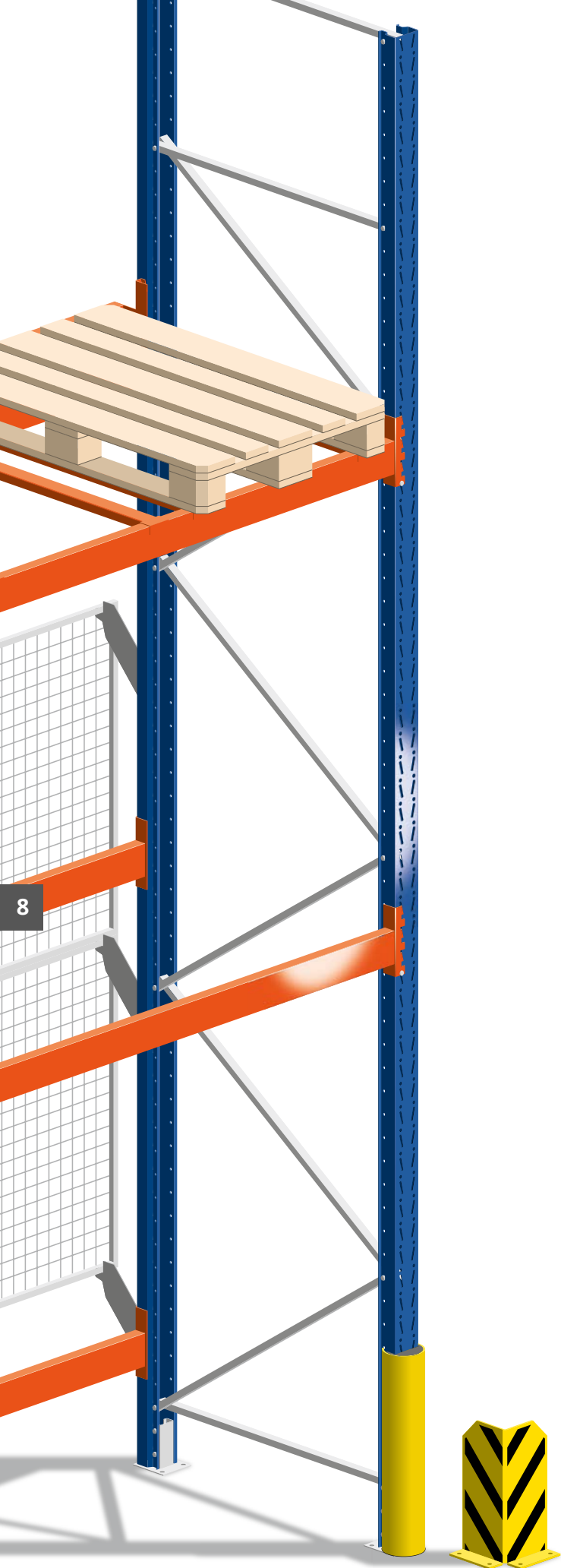


Grid shelving - extremely strong and also suitable for sprinkler systems



Various wire grating shelves
Shelving made of sheet metal elements, perforated and non-perforated





Safety

The SL100 shelving system is designed for safe and simple handling; it satisfies all the statutory requirements. Further elements to ensure problem-free use include accessories to protect the goods and the shelving itself, training for warehouse staff and shelf inspections (see rear).

Important: Safe use can only be guaranteed if the maximum permissible loads are observed. Please note the upper limit specified on the assembly instructions and the load stickers.



Back wall grid



Anti-tilt U-bolt on the front, can also be retrofitted



Various collision protection versions



OUTDOOR USE

Whether as an outdoor store or as sales shelving in a garden centre: The galvanised version of the SL100 shelf system with matching accessories is weather-proof and ideal for outdoor use.

Important: The SL100 requires a concrete base to ensure stable positioning.



Galvanised surfaces



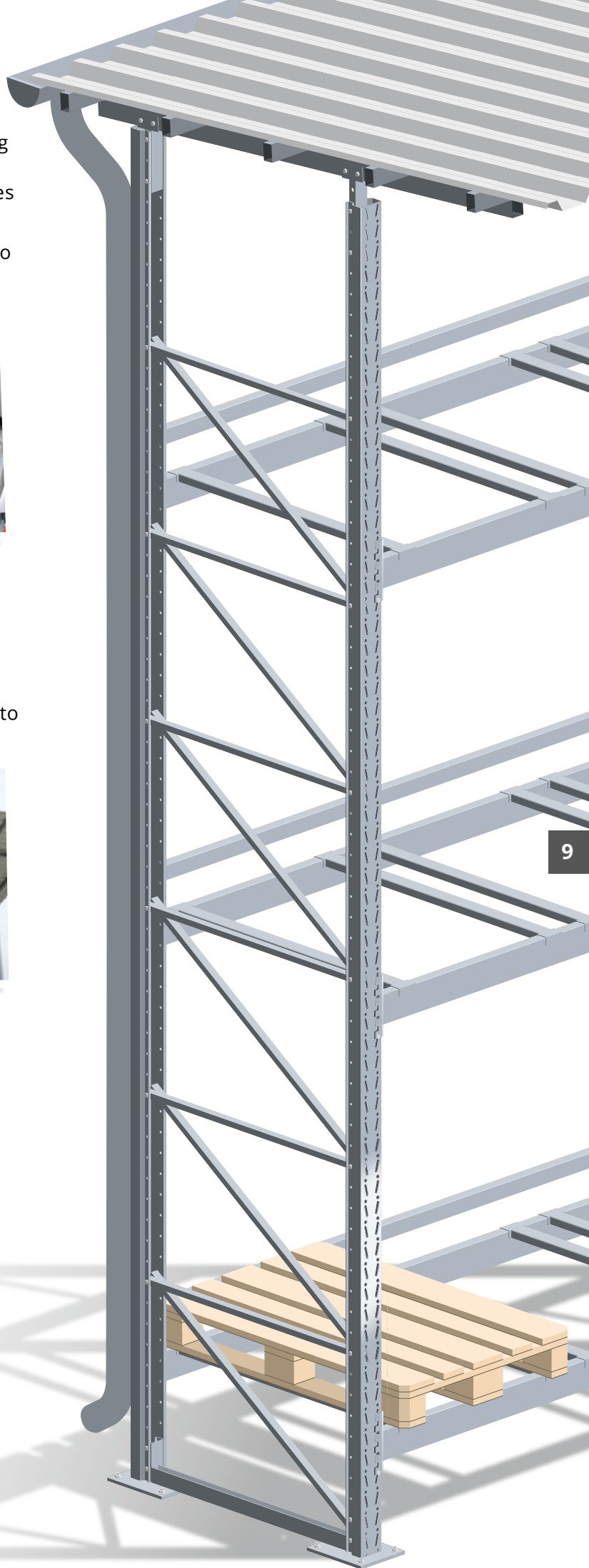
Perforated sheet metal shelving

Roof covering

Our proven roof system protects your goods stored in outdoor shelving. The design is suited to withstand rain, snow and wind loads.



Trapezoidal sheet roof with roof girders and rain drainage





SHELF FIXTURES

The SL100 system comprises a wide range of components for individual presentation solutions and material storage, suitable for goods such as tiles, worktops as well as small parts. Do you want to present your goods at the bottom and store them at the top? This isn't a problem with the SL100 shelving!

Gondolas and back walls

The vertical gondolas with their hole patterns are used to mount additional components. The shelf depth can also be changed by moving the back wall forward.



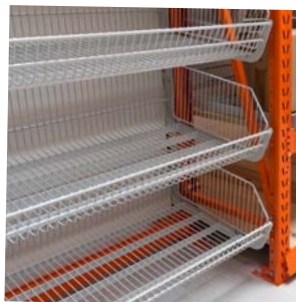
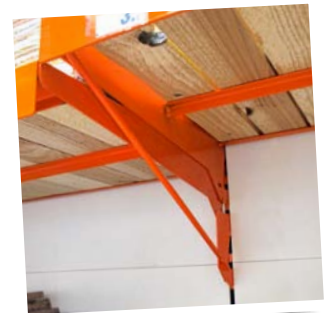
Wall gondola (left) with back wall element and gondola which has been moved forward (centre)



Back wall with Euro perforation, with front perforated strip for attaching additional holders

Shelving elements

Heavy loads are best stored directly on the cross-beams. Furthermore, shelving frames, baskets etc. attached to the gondolas offer a wide range of design options.



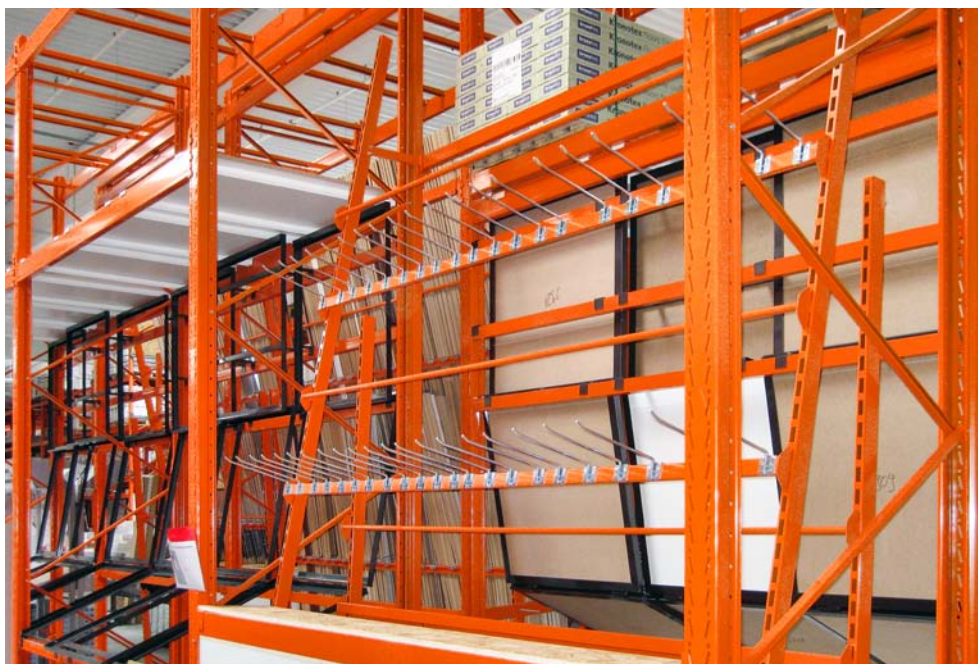
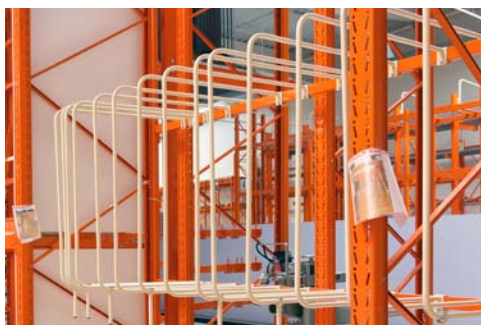
Frames for mounting shelves (e.g., wooden boards, sheet metal, perforated metal plate), for 3 tilting positions

top: Reinforced shelving frame for heavy loads

left: Baskets for suspension, perforated metal plate or wire grating

Dividers

Categorise, protect, mount, move: Brass offers a huge variety of elements for the most diverse products. Just a few examples are given below. We will be delighted to advise you on customised solutions.

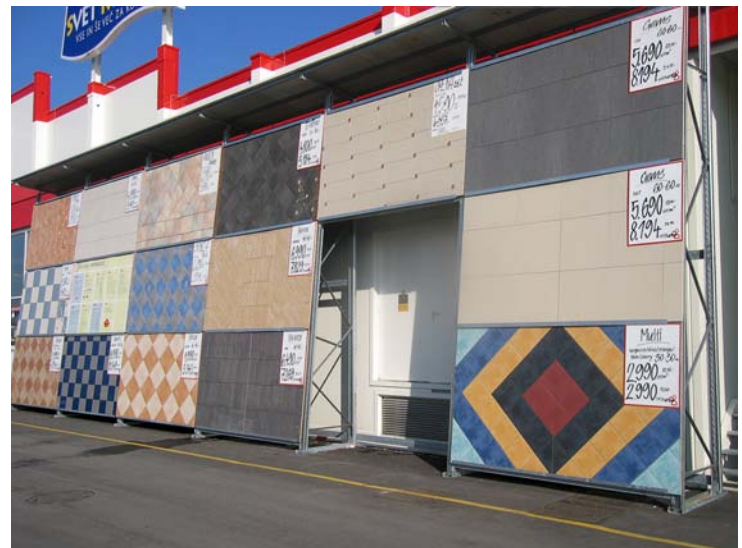


Various dividers, holders and mounts, flexibly attached to the crossbeams

APPLICATION EXAMPLES



Examples for presenting tiles, natural stone and laminate flooring – including outdoors



Folding boards and overhead surfaces extend your presentation and information options

12





Special solutions for presenting
sinks, baths and carpets

middle right: Cabinet fixture
with side areas and folding doors

right: Fixture for rails and
small parts



Customisable shelving for workshops and production operations: for storing wood and metal boards, cable drums, spare parts boxes and loose small parts



The SL100 shelving can accommodate anything from insulating wool to car bodies (special sizes)

Storage shelving with integrated roller track



Application examples for outdoors



BRASS SERVICE

> Consultation and planning

Let us offer you non-binding advice. Our team would be delighted to develop a proposal and create detailed planning for your shelving system.

> Sales and assembly

Brass delivers your customised shelving system and also offers a convenient assembly service via its trained contract partners.

> Training

Do you want to set up and convert the shelving yourself? We can provide you with the necessary know-how – either as a written guide or via face-to-face training.

> Maintenance

Annual shelving maintenance as prescribed by law guarantees safety during ongoing operation.

> Repairs and recycling

Have faulty shelving parts replaced, or repaired and given a new surface coating.